



# SERVICE BULLETIN GENERAL

PRODUCT: MULTIPLE		SECTION: ELECTRICAL	
DATE: OCTOBER 7, 2009	REPLACES BULLETIN:	BULLETIN NO: 09-0131	

## **GTA CONSOLE II SD CARD SLOT REPLACEMENT AG-CHEM, AGCO BRAND, CHALLENGER, GLEANER MASSEY FERGUSON, & WHITE PLANTERS**

### **SUBJECT**

The internal sd card slot for the GTA Console II will fail if the sd card for mapping or reprogramming is inserted incorrectly. A replacement internal card slot is now available for the GTA Console II if the machine is out of warranty.

### **BRANDS, MODELS AND SERIAL NUMBERS INVOLVED**

<b>BRANDS</b>	<b>MODELS</b>	<b>SERIAL NUMBERS / RANGES</b>
AG-CHEM	TERRAGATORS	
AGCO® BRAND	LARGE SQUARE BALERS	
CHALLENGER	LARGE SQUARE BALERS	
CHALLENGER	COMBINES	
GLEANER®	COMBINES	
MASSEY FERGUSON®	LARGE SQUARE BALERS	
MASSEY FERGUSON®	COMBINES	
WHITE PLANTERS	PLANTERS	

### **PARTS AND TOOLS INVOLVED**

<b>PART NUMBER</b>	<b>QUANTITY</b>	<b>DESCRIPTION</b>
72571538	1	SD Card Slot

## **CORRECTIVE ACTION**

Order replacement sd card slot from AGCO Parts Division. Install new component per the instructions listed below.

**\* Note: The following repair is only authorized if the machine is out of warranty. If the repair is performed on a machine that is still in warranty, the warranty for the GTA screen will be voided.**

**\*Note: If the GTA screen was purchased as part of a kit, normal parts warranty applies.**

**\* Note: The following repair should be performed in a clean work environment that is free of static electricity and electromagnetic fields.**

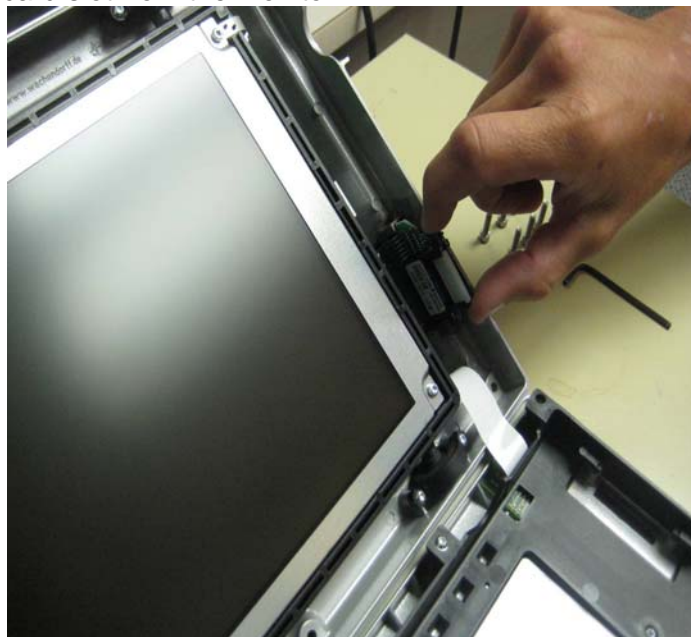
1. Remove the six (6) screws that hold the cases of the monitor together.



2. Turn the monitor over carefully. Gently remove the front cover of the monitor. Use extreme caution and do NOT damage the white ribbon cable.



3. Remove the damaged card slot from the monitor.



4. Remove the white spacer and multi-media card from the damaged sd card slot. To remove the multi-media card, simply push in on the end of the card. The multi-media card will then release from the holding tab. Insert the multi-media card and spacer into the replacement sd card slot.



5. Insert the replacement sd card slot into the monitor. Pay special attention to the micro-chip prongs that get inserted into the green circuit board. Gently push the sd card slot into place.



6. Once the sd card slot is seated into the green circuit board, re-attach the cover of the monitor to the case of the monitor. Make sure that the white ribbon does not get damaged when the two monitor cases are put back together.



7. Insert the six (6) screws that were removed earlier back into the screw holes of the monitor case.





# SERVICE BULLETIN GENERAL

---

## **WARRANTY INFORMATION**

TYPE OF WARRANTY: INFORMATIONAL BULLETIN ONLY  
CAUSAL PART NUMBER:  
LABOR RATE CODE:  
DEFECT CODE:  
LABOR HOURS:  
LABOR DESCRIPTION:  
FAILURE DESCRIPTION:  
PARTS DISPOSITION: