

07 April 2015

To: All TPA Dealers

Service Bulletin #15SB15003

Re: AGI-3 and AGI-4; Map spinning or flipping due to uninitialized

From: Topcon Precision Agriculture

Introduction

AGI firmware may cause the unit(s) to become uninitialized.

Symptoms/Units Affected

This causes the vehicle speed and heading on the console to revert to a zero value, then suddenly back to the actual values. This sudden change results in the perception map “flipping/spinning around.” This problem can also result in fixed on-ground offset errors. This issue has only been seen when there is NO IMU module installed and affects the AGI-3 & AGI-4 receivers.



Workaround

The following GRIL command can be utilized to fix the problem on customer machines:

```
%%set,/par/mc/tp/kf/accbiascorr,off
```

See additional pages for detailed instructions.

Note: Clearing the NVRAM and recalibrating the compass may allow for continued operation, although the issue will reoccur.

Solution

Engineering has addressed the issue in the upcoming Y13P8 firmware.

- X30: 3.18.48
- X25: 3.18.211

- X14: 3.17.108
- GX-45: 2.14.04

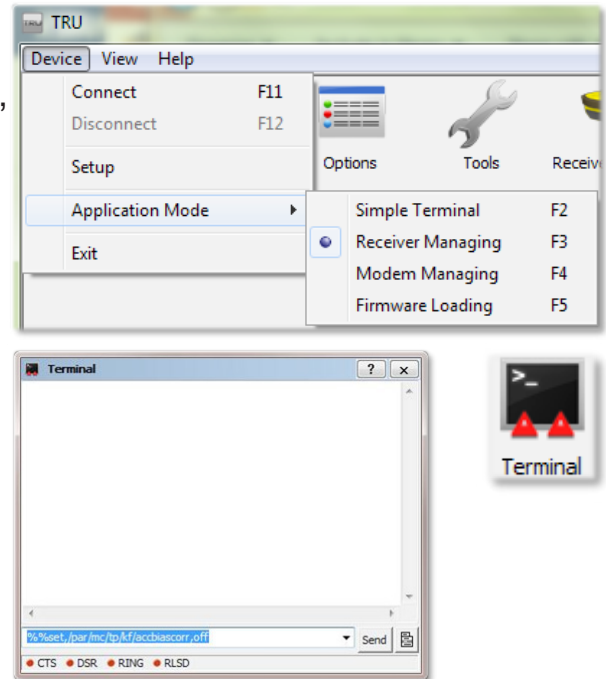
AG | RX

Workaround Methods (TRU/X25 | X30 Console)

This can be done by connecting a PC to either serial port of the AGI-3 or AGI-4 receiver. Then connect using TRU to manually send the GRIL command to the receiver. Use AGA4300 diagnostic cable for AGI-3 or AGA5427 for AGI-4 serial connections. These GRIL commands can also be executed by entering 3.18 Technician mode on X25 and X30 consoles.

TRU Software Method

- Once connected through “Receiver Managing”
- Go into “Terminal and type script `%%set,/par/mc/tp/kf/accbiascorr,off` in the bottom of the screen and send
- Then close “Terminal” screen
- Finished



X25/X30 Technician Mode

- Select X25/X30 settings menu
 - Go to User/Access Level
 - Choose “Technician Mode” and enter the correct password ([Contact Topcon Support Line](#))
 - Go to System/GPS/Advanced Settings
 - Choose Send Command and enter the GRIL command
 - Select the green check mark
 - Return to User/Access Level and choose “User” as the access level
- Note: The user level will change after the next power cycle*
- Finished



AG | RX